



Polyclonal Anti-human IL-6^{HuXp} Antibody

Specifications

Species	Rabbit
Source	Human cell
Pack Size	100 µg
IsoType	Total IgG
Storage	-20°C

Product Description

Rabbit polyclonal anti-human IL-6 antibody was raised against recombinant human IL-6 expressed in human cell (rhIL-6^{HuXp}). HumanZyme's human cell expression system has the advantage of tag-free expression and purification, correct folding, accurate tertiary and quaternary structure and authentic post-translational modifications such as glycosylation, phosphorylation, palmitoylation and disulfide bonds. These post-translational modifications are absent in non-human cell expression system and have important implications for cytokine stability, receptor interaction and in vivo efficacy. Total IgG was purified using Protein A affinity chromatography.

Formulation

Lyophilized from 0.2µm filtered solution in PBS.

Reconstitution

Reconstitute with sterile PBS or H₂O. The concentration of antibody will be 1 mg/mL when resuspended in 0.1 mL PBS or H₂O.

Limited Use and Restrictions

Unless otherwise stated in our catalog or other company documentation accompanying the product, products sold by HumanZyme Inc. are intended for research use only and are not to be used for any other purpose, which includes but is not limited to, unauthorized commercial uses, including resale or use in manufacture, in vitro diagnostic uses, ex vivo or in vivo therapeutic uses or any type of consumption or application to humans or animals. For a complete statement of this Limited Use License and its application to drug discovery and diagnostic research please visit www.humanzyme.com

Certificate of Analysis

Polyclonal Anti-human IL-6^{HuXp}

Antibody

Cat #: HZ-5005

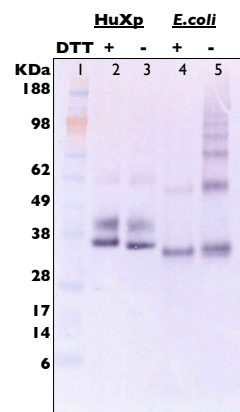
Lot #: I107080001

Background

Interleukin 6 (IL-6) is mainly expressed by T cells, macrophages, monocytes, fibroblasts, endothelial cells, mast cells, eosinophils, granulocytes and keratinocytes. IL-6 expression can be stimulated by a number of different factors including, T cell mitogens, LPS, viruses, IL-1, TNF, IL-2, IFN- β , platelet derived growth factor, protein kinase C, and calcium. IL-6 is expressed as a glycoprotein with a variable molecular mass as a result of differential glycosylation/phosphorylation patterns. IL-6 is a pleiotropic cytokine that regulates the development, proliferation and maturation of a number of hematopoietic cells and is essential for the maturation of B cells. IL-6 can also influence the growth and function of nerve cells, metabolism of bone and induction of acute phase proteins in hepatocytes. IL-6 signals through the IL-6 receptor system.

Applications

Western Blot - This antibody can be used at 0.5 - 2 µg/mL with the appropriate secondary reagents to detect human IL-6. The detection limit for rhIL-6 is approximately 10ng/lane under reducing and non-reducing conditions.



The Western Blot shows 100ng of IL-6 from two different expression systems: HuXpTM (lane 2,3) E.coli (lane 4,5). Antibody concentration is 1µg/mL.